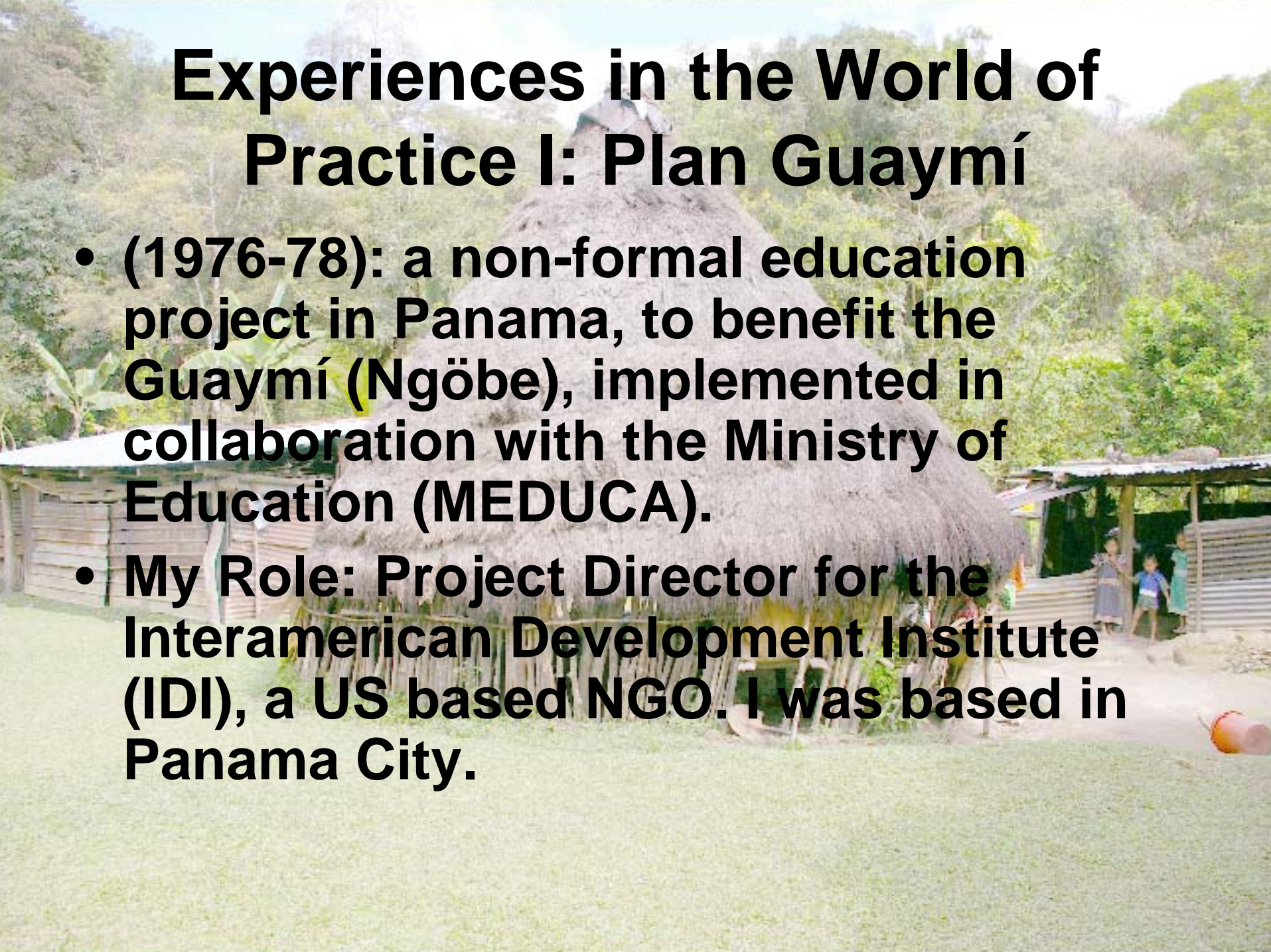
A photograph of a beach with wet sand and shallow water ripples. The sand is a mix of light and dark brown, and the water is a clear, shallow blue. The ripples are formed by the receding tide, creating a series of parallel lines across the beach.

**PRACTICING  
ANTHROPOLOGY FROM  
WITHIN THE ACADEMY:  
COMBINING CAREERS**

**Philip D. Young  
University of Oregon**

# **Experiences in the World of Practice I: Plan Guaymí**

- **(1976-78): a non-formal education project in Panama, to benefit the Guaymí (Ngöbe), implemented in collaboration with the Ministry of Education (MEDUCA).**
- **My Role: Project Director for the Interamerican Development Institute (IDI), a US based NGO. I was based in Panama City.**



# Lessons from Plan Guaymí

- Language fluency does not automatically convey understanding of organizational and interpersonal dynamics.
- Take careful notes in meetings.
- A crisis a day. Project director as repair person.
- Negotiate, compromise, be diplomatic.
- Recognize and respect ALL stakeholders.
- Achieving project goals depends on amicable relations and understanding of political dynamics.


# **Experiences in the World of Practice II: SMDP**

- **Southern Manpower Development Project (1981-82): a manpower and training assessment project in the Southern Sudan, contracted by USAID to Development Alternatives, Inc. (DAI)**
- **My Role: long term consultant on educational administration and curriculum development and revision at the Yambio Institute of Agriculture, a 2 year boarding school. I lived in Yambio.**

# Lessons from SMDP

“Things fall apart.”

(Chenua Achebe, 1959)

A map of Latin America and the Caribbean region, showing countries from Mexico to Argentina and Chile. Major cities like Mexico City, Havana, Lima, and Buenos Aires are marked. The map includes latitude and longitude lines and is overlaid with a semi-transparent blue box containing text.

# Experiences in the World of Practice III: DESFIL

- **Development Strategies for Fragile Lands in Latin America and the Caribbean (1989-91): a USAID program contracted to DAI.**
- **My Role: Senior Program Manager for DAI. I was based in Bethesda, MD & traveled to Latin America as needed.**

Scale 1:50,000,000

0 1000 Kilometers  
0 1000 Miles

Azimuthal Equal-Area Projection

Falkland Islands  
(Islas Malvinas)  
(administered by U.K.  
claimed by Argentina)

South Georgia and the  
South Sandwich Islands  
(administered by U.K.  
claimed by Argentina)

# Lessons from DESFIL

- Program management (several projects) much more complex than single purpose project.
- USAID wants simplification and straightforward recommendations.
- USAID prefers that everything run their way.

# Preparing for Practice

- Experience: internships, field schools
- Computer skills
- Statistics
- Rapid Appraisal techniques
- Economics course(s)
- Basic business management
- Language training
- Choose research with future practice in mind

# Strategies for Promotion and Tenure

- Job interview: ask about P & T standards
- Job offer: negotiate P & T terms
- If non-negotiable: formulate P & T strategy
- Will applied work count?
- Turn reports into peer reviewed publications

# Writing Styles: What is Valued

## In The Academy

- The Sacred Abstract
- Publications, peer-reviewed, with theoretical discussion and use of the jargon of the discipline
- Focus on issues of academic interest
- Contributions to theory

## In The World Of Practice

- The equally sacred executive summary
- Clear, succinct reports with tightly focused analysis and persuasive recommendations
- Focus on real world problems
- Practical results